



SIBELCO
DEUTSCHLAND

FUCHS CERAMIC BODIES

Keramiken von S. Altzweig, M. Debus, A. Hinder, U. Matschke & M. Meyer, F. Roßmann



NEWS • NEWS • NEWS • NEWS • NEWS • NEWS • NEWS • NEWS

FUCHS CERAMIC BODIES



SIBELCO
DEUTSCHLAND

NEWS • NEWS • NEWS • NEWS • NEWS

WM 3020 FS

Chamotte: 30%, 0,5 - 2,0 mm
Temperature range: 1000 - 1250°C



photo: 1240°C

SZ / RIF 4005

Chamotte: 40%, 0 - 0,5 mm
Temperature range: 1000 - 1280°C



photo: 1200°C

SZ / RIF 4020

Chamotte: 40%, 0 - 2,0 mm
Temperature range: 1000 - 1300°C



photo: 1300°C

G 2502

Chamotte: 25%, 0 - 0,2 mm
Temperature range: 1000 - 1260°C



photo: 1120°C

WMS 3020 GG

Chamotte: 30%, 0 - 2,0 mm
Temperature range: 1000 - 1250°C



photo: 1250°C

Blue 4005

Chamotte: 40%, 0 - 0,5 mm
Temperature range: 1000 - 1280°C



photo: 1100°C

WFSZ 2002

Chamotte: 20%, 0 - 0,2 mm
Temperature range: 1000 - 1200°C

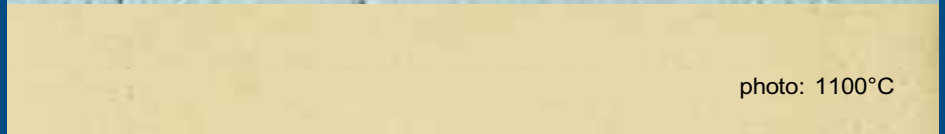


photo: 1100°C

WFSZ 3015

Chamotte: 30%, 0 - 1,5 mm
Temperature range: 1000 - 1200°C



photo: 1200°C

Yellow Rock 4020 FS

Chamotte: 40%, 0 - 2,0 mm
Temperature range: 1000 - 1240°C



photo: 1200°C

Terra Grigia 4020

Chamotte: 40%, 0 - 2,0 mm
Temperature range: 1000 - 1200°C

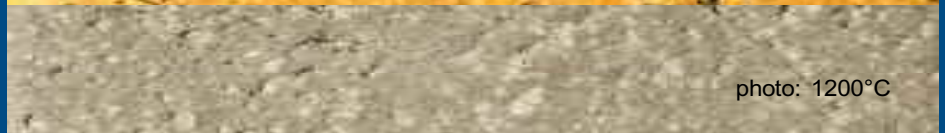


photo: 1200°C

Terrazzo Rot 4020

Chamotte: 40%, 0 - 2,0 mm
Temperature range: 1000 - 1160°C



photo: 1100°C

PC / RBL

Porcelain body
Temperature range: 1240 - 1280°C

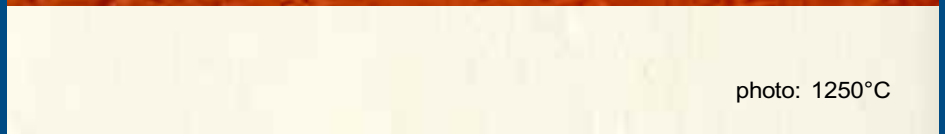


photo: 1250°C

SIBELCO DEUTSCHLAND GmbH

Sälzerstraße 20
D-56235 Ransbach-Baumbach

Phone: +49 (2623) 83-0
Fax: +49 (2623) 83-1499
E-Mail: kontakt@sibelco.de
Internet: www.sibelco.de

Rechtsform: GmbH
Sitz der Gesellschaft: 56235 Ransbach-Baumbach
Amtsgericht: Montabaur, HRB 1581
Geschäftsführer: Frank Schäfer